

Mullum Mullum Stadium - Ace Floors & Seating – Five New Courts

Mullum Mullum Reserve is a large 11.3 hectare reserve between Springvale Road, Reynolds Road and the Mullum Mullum Trail. The Reserve provides a range of sporting facilities, including hockey, bowls, tennis and now a brand new five court indoor stadium completed in June 2018.

City of MANNINGHAM'S premier new five-court sporting facility, the Mullum Mullum Stadium in Donvale is expected to cater to 100,000 users each year, the stadium is one of the largest community sporting facilities in Melbourne's east, featuring five multi-use indoor sports courts and seating for up to 500 spectators.

Ace Floors & Seating installed its FIBA Level 1 ProAir Wide Body Sleeper System in premium Action Maple and the impressive indoor courts meet national & international competition standards for a range of sports including basketball, netball and table tennis.



Herald Sun report July 10, 2018

Manningham Mayor Andrew Conlon said the stadium was a fantastic new multi-use sports facility for Manningham and the region.

“This is an exciting new stadium that will connect athletes, spectators and the wider community. It will provide opportunities for all-abilities and all ages to get active and participate in sport,”

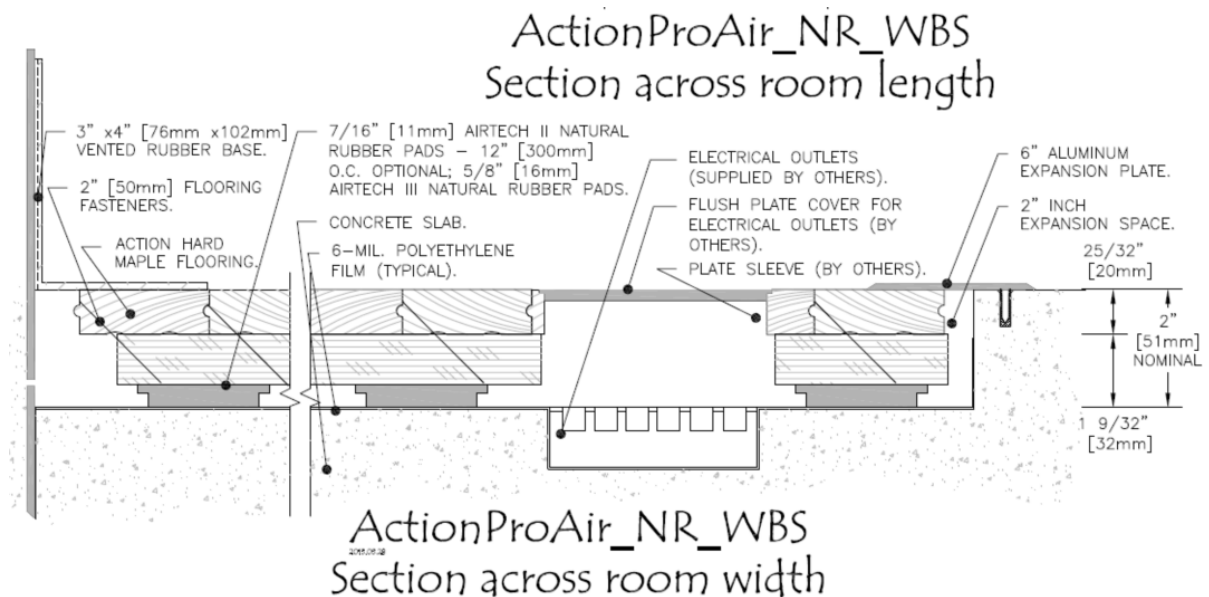
You can't get enough basketball courts out in the east of Melbourne, you can't get enough netball courts in the east of Melbourne, because I think the east of Melbourne is the epicentre of those particle sports right across Australia. This is a fantastic facility and will be utilised in a great way for a long time.

Andrew Conlon, Mayor – Manningham City Council:

Finding the Right Floor

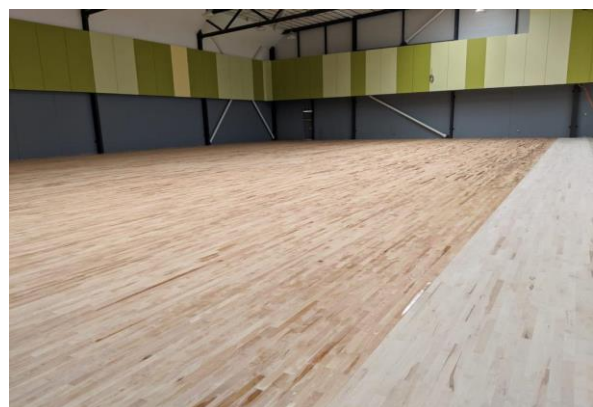
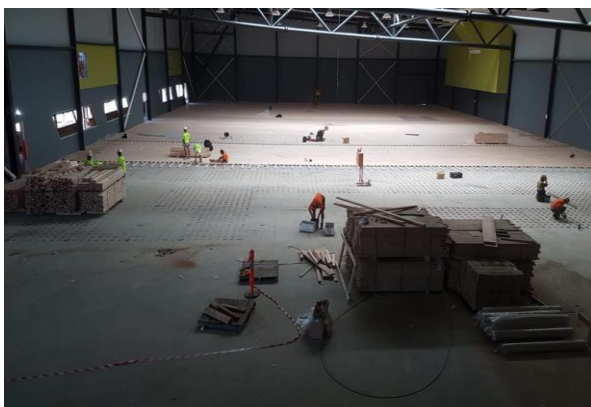
Jason Tully, Co Director Ace Floors & Seating says “it started with identifying what was needed in a sports floor system for a new building that would serve athletes of several sports all year-round.

“We worked through the attributes of each option, including the grade of maple, the type of substructure, the environment of the stadium and the level of competition to be housed Tully explained. “It was almost like a process of elimination. We identified what didn’t fit and then worked through the various certified options.”



Dale Joseph Co Director adds that shock absorption was one of the most important criteria considered for the Mullum Mullum courts, which is one reason why the floating resilient ProAir WBS system was ultimately chosen.

Joseph says. “They’re running a lot of adults and kids through the five courts. So, we wanted something that would hold up well yet allow for a good amount of airflow underneath.”





Melbourne can produce many different temperature and humidity swings and proper airflow helps protect the floor from moisture damage. Ace pride themselves on sourcing responsibly sourced materials and the Action Maple installed at the stadium is also produced via the worlds only carbon negative mill.

Ace Floors were able to work closely with the council and architects to supply and deliver a first-class surface that will serve athletes and the community for many decades to come.



The Ace Advantage –

- ❖ 17 years industry experience
- ❖ Quality control, Management on Site for all Projects
- ❖ Extended Warranties as Standard on all our Installations
- ❖ Green responsibly sourced materials from trusted established suppliers
- ❖ Multi court venue specialist – AIS Canberra 4 courts 2016 home of the NBA Global Academy 3,000 fixed & retractable seats Bendigo multi court Stadium 2017
- ❖ Contracted for 2018 / 19 – Ballarat 5 new courts & 2,900 seats – Somerville Stadium 4 new courts – Newhaven College 2 new courts – Manor Lakes School 1 new court – Phillip Island Visitor Centre new retractable seating system – New Courts at McClelland College & Parktone Primary School - Warrumbungle Shire Council portable seating units

Ace Floors & Seating – Big Enough to Deliver, Small Enough to Care