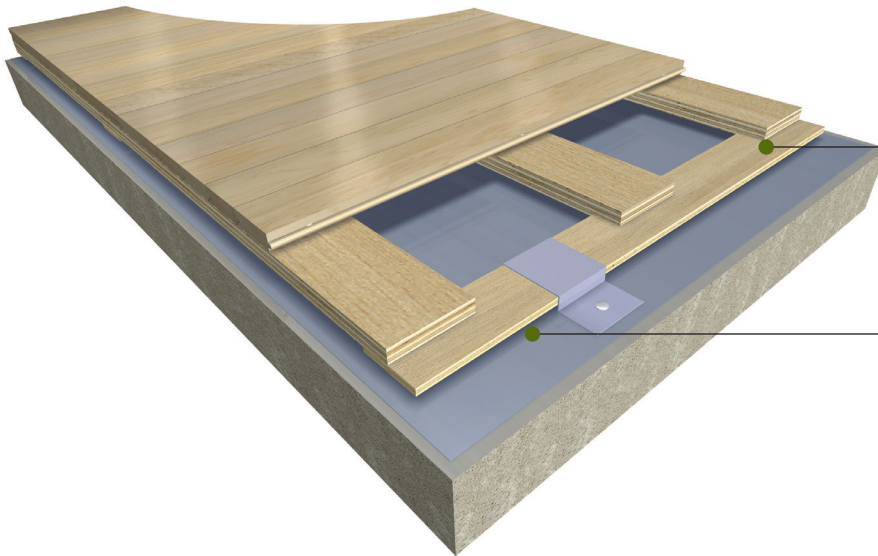




Aero NR Floor System

SYSTEM TYPE: RETAINED RESILIENT



Fabricated Subfloor System with recessed pad pockets

ProAction 5/8" (16 mm) Natural Rubber Pads

MFMA NORTHERN HARD MAPLE BY ACTION:

Random Length (RL)
Action Long Length (FJ)

TESTING AGENCY:

Certified by ISSS

PERFORMANCE MEETS OR EXCEEDS:

EN 14904 Type 4
DIN 18032 Part 2 (1991 & 2001)
ASTM F2772
MFMA PUR
FIBA Level I

SLAB DEPRESSION:

25/32" (20 mm): 2" (50 mm)
33/32" (26 mm): 2-1/4" (57 mm)

LEED:

FSC Maple & Subfloor available, MR credits — based on products, selected materials and facility locations

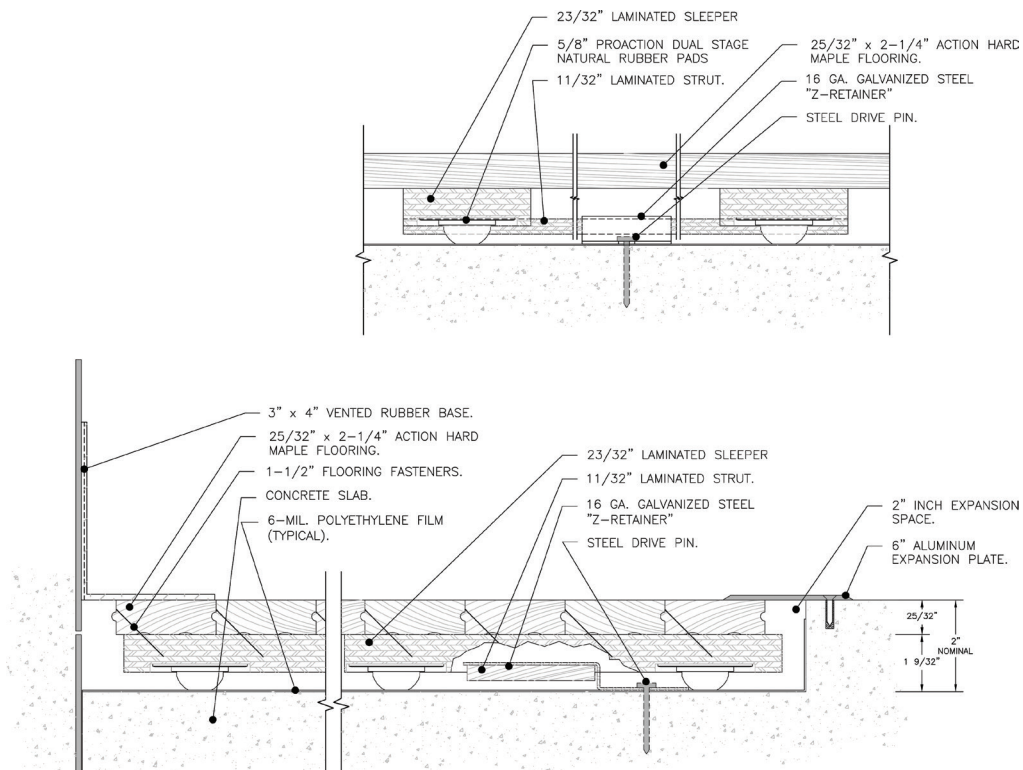
PERFORMANCE & SYSTEM STABILITY:

- Variable load response ProAction pads
- Excellent ball bounce and playability
- Excellent shock absorption
- Factory fabricated subfloor for superior consistency
- SCORES Compliant

- Engineered to maximize shock absorption, ball rebound, and point-to-point deflection for outstanding playability.
- Factory fabricated subfloors maximize the products uniformity and consistency contributing to athletic safety.
- The manufacturer and flooring shall be independently verified by the guidelines of the ISO 14040-2006 and ISO 14044: 2006 Life Cycle Assessment (LSA) confirming a negative carbon footprint.
- Carbon Evaluation must be inclusive and based on all corporate facilities, offices and mills.
- The manufacturer and flooring shall be independently verified by the guidelines of the ISO 14064-1:2006 World Resource Institutes Greenhouse Gas Protocol, Scope 1, 2 and 3.
- The manufacturer and flooring shall be registered in the Collaborative for High Performance Schools (CHPS) Product Database.

Complete product specifications and system drawings (CAD and BIM) are available online at:

www.actionfloors.com



Action Aero NR



ACTION FLOOR SYSTEMS LLC
4781 N. U.S. Hwy. 51 • Mercer, WI 54547-9708 U.S.A.

PHONE: 800.746.3512 or 715.476.3512 • FAX: 715.476.3585
E-MAIL: info@actionfloors.com

www.actionfloors.com

